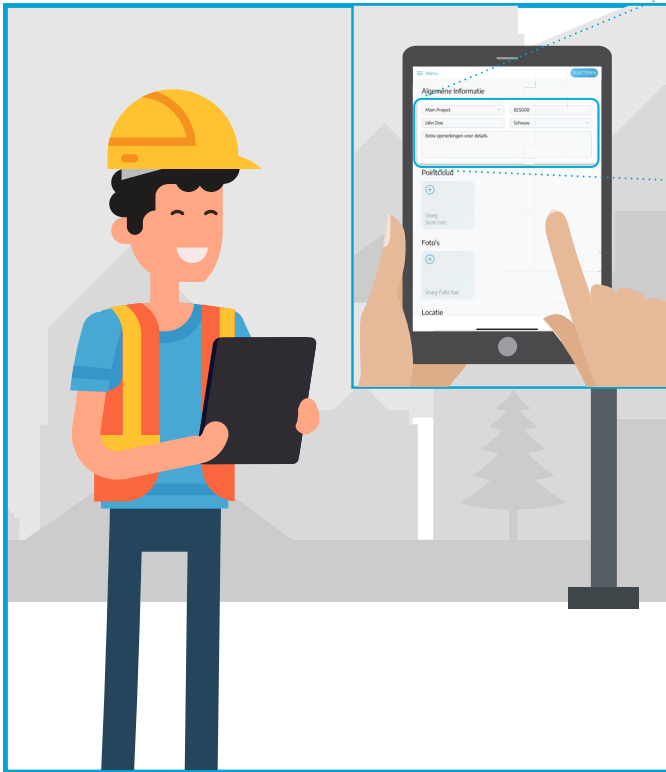


USER MANUAL LiDAR TO GO

For optimal use of the LiDAR scanner, always read the manual carefully first.
Reference points are crucial. Always make sure you have sufficient and clear reference points!

Step 1. General information



Algemene Informatie

Project Naam	1	Sectie / Scan	2
Jab	3		
Opmerkingen			
4			

Fill in the general project information:

- 1 Select a project;
- 2 Enter the project code;
- 3 Enter your first and last name;
- 4 Place a comment if necessary.

Step 2. Prepare scanning

POINTCLOUD

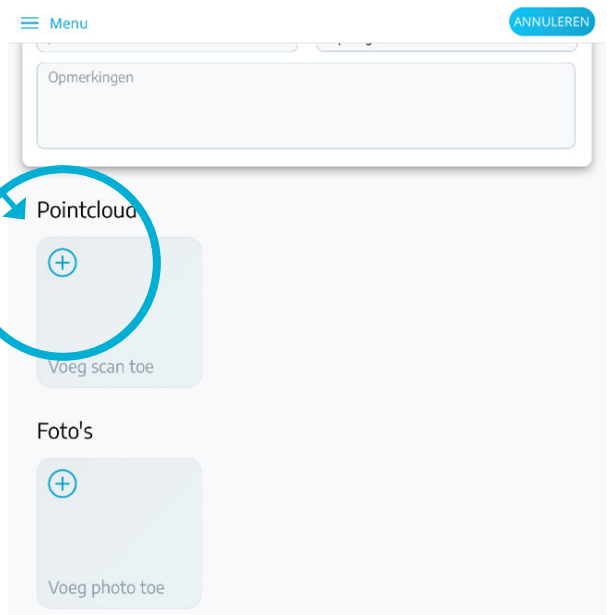
Press the plus sign under pointcloud to start the scan.

Caution!

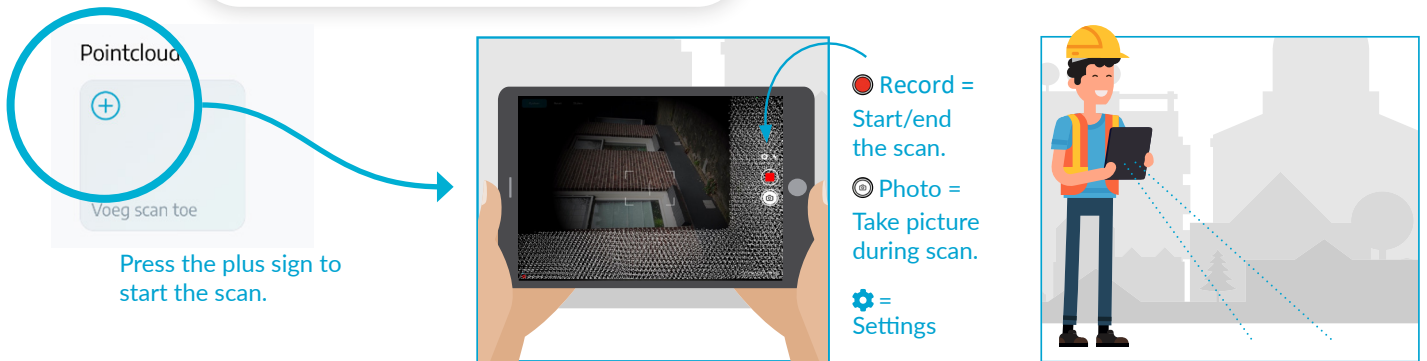
Always scan a reference point at the beginning, during and at the end of the scan! For example, a house, lamppost, tree, well, curbs, parking spaces. Or scan on from a previous scan. Always scan a reference point from two sides/angles.

PHOTOGRAPHS

All objects should be photographed. For example, DPs, rollers, valves, etc. Photographs should be taken of reference points during scanning so that the reference points are clearly visible.



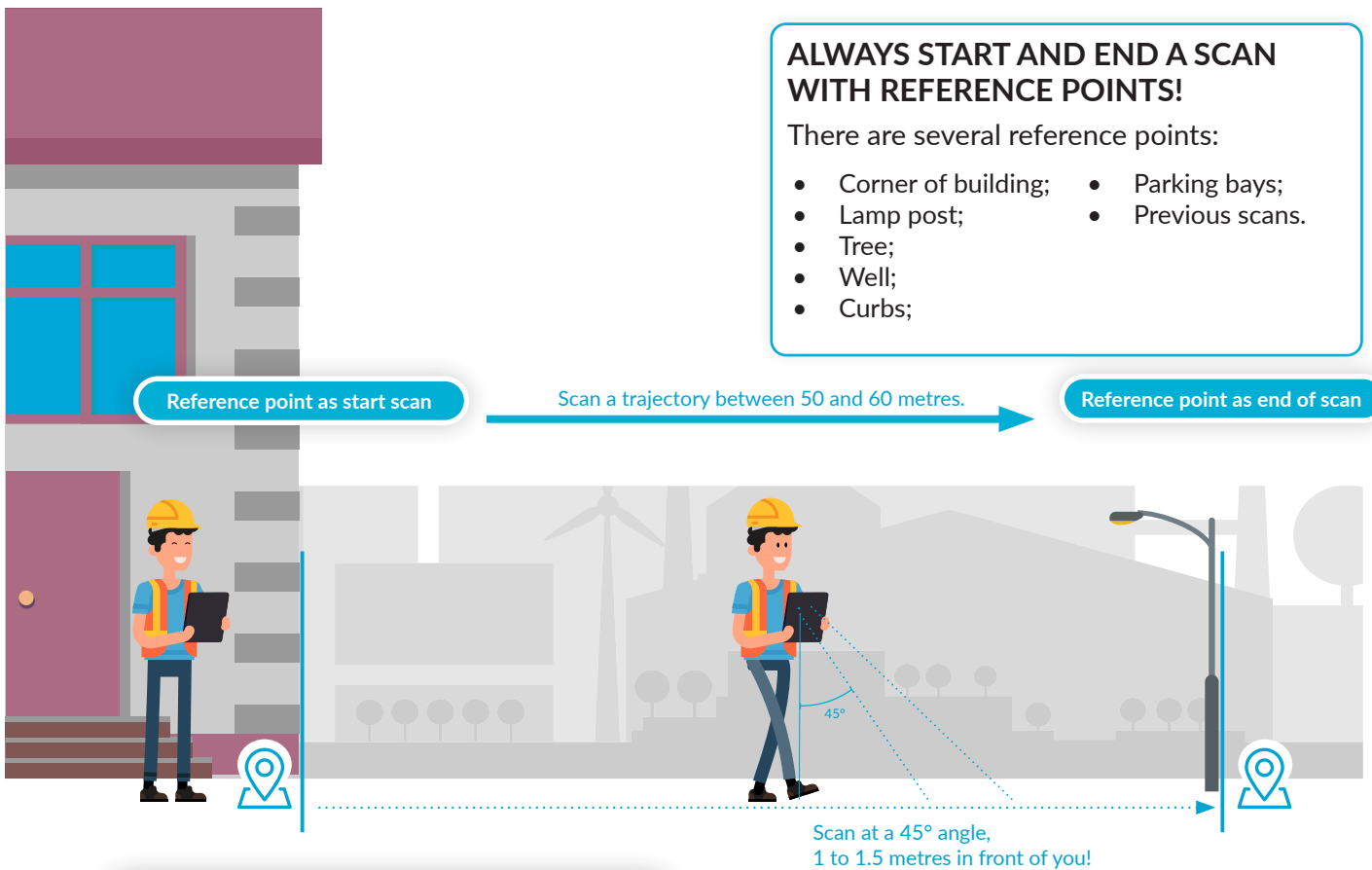
Step 3. Scan



ALWAYS START AND END A SCAN WITH REFERENCE POINTS!

There are several reference points:

- Corner of building;
- Lamp post;
- Tree;
- Well;
- Curbs;
- Parking bays;
- Previous scans.



Step 4. Check and send scan

